



# Fat Quarter Four Patch

Quilt Pattern  
Fat Quarter Shop Exclusive



Finished Size: 60 1/2" x 75 1/2"

## LAP QUILT

### FABRIC REQUIREMENTS

- Twenty Fat Quarters  
Shop Fat Quarter Bundles at:  
[www.fatquartershop.com/fat-quarter-bundles](http://www.fatquartershop.com/fat-quarter-bundles)
- 1 1/3 yards accent fabric
- 3/4 yard binding
- 4 3/4 yards backing

### CUTTING

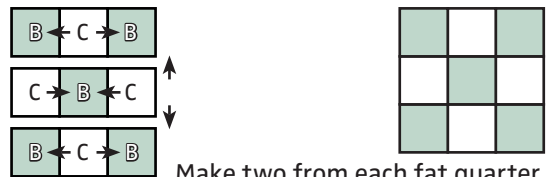
- Cut twenty 18" x 20" rectangles into:  
2 - 8" squares - 40 total (Fabric A)  
10 - 3" squares - 200 total (Fabric B)
- Cut accent fabric into:  
160 - 3" squares (Fabric C)
- Cut binding fabric into:  
8 - 2 1/2" x width of fabric strips (Fabric D)

Use 1/4" seams and press as arrows indicate throughout.

### BLOCK ASSEMBLY:

Assemble Unit using matching fabric.

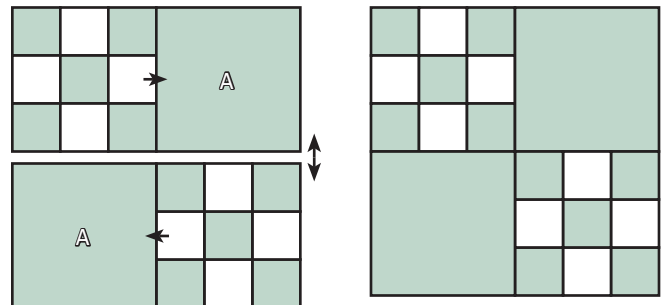
Nine Patch Unit should measure 8" x 8".



Make two from each fat quarter.  
Make forty total.

Assemble Block using matching fabric.

Fat Quarter Four Patch Block should measure  
15 1/2" x 15 1/2".



Make one from each fat quarter.  
Make twenty.

**Ready. Set. Sew!**

#FQSFourPatchQuilt



Check out the  
Tutorial on

YouTube

[www.FatQuarterShop.com](http://www.FatQuarterShop.com)



© 2023 Fat Quarter Shop, LLC. All rights reserved. Duplication of any kind is prohibited. This pattern may be used for personal purposes only and may not be reproduced without the express written permission from Fat Quarter Shop. This pattern may not be used for commercial purposes. This pattern may only be hosted, accessed, and downloaded from [www.FatQuarterShop.com](http://www.FatQuarterShop.com).



# Fat Quarter Four Patch

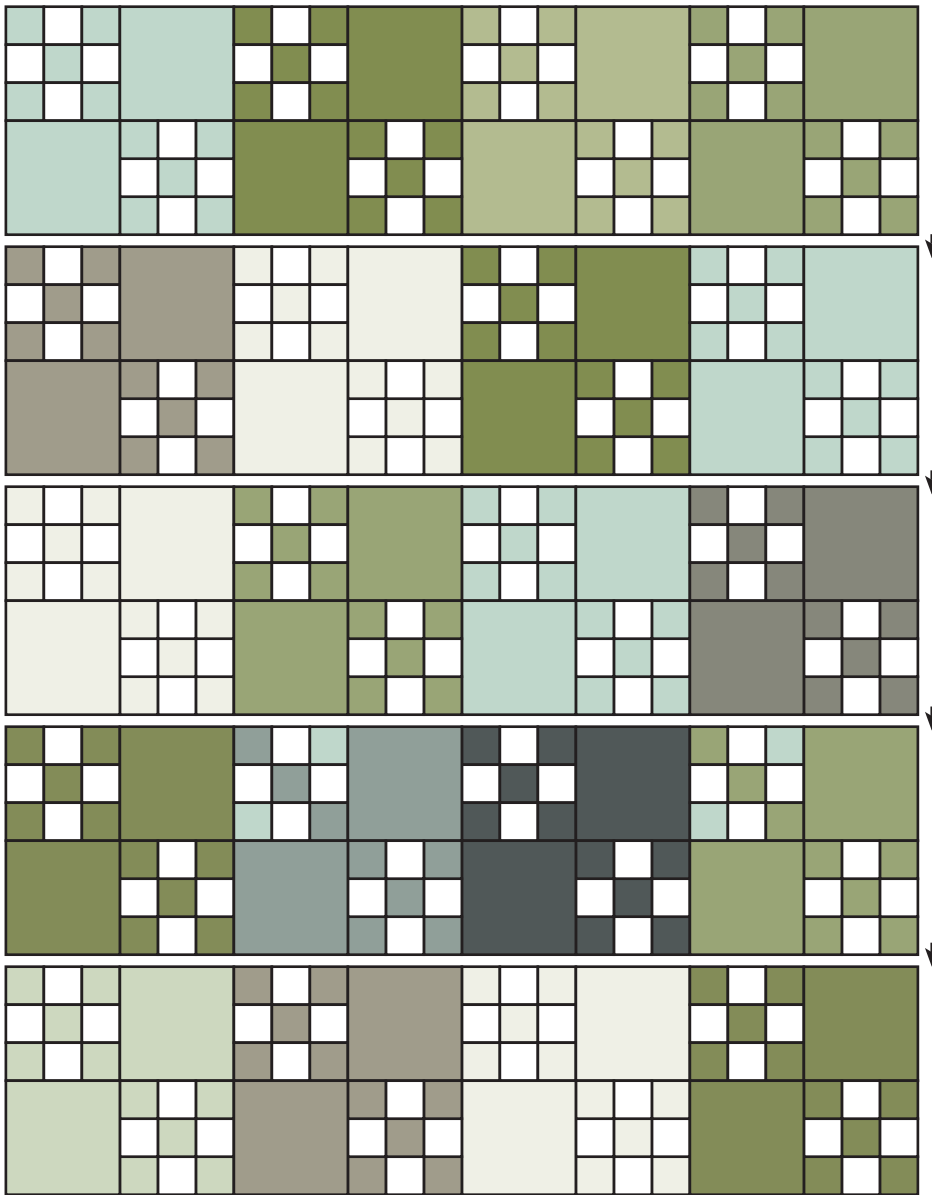
Quilt Pattern  
Fat Quarter Shop Exclusive

## QUILT CENTER:

Assemble Quilt Center.

Press rows in opposite directions.

Quilt Center should measure 60 1/2" x 75 1/2".



---

## FINISHING:

Piece the Fabric D strips end to end for binding.

Quilt and bind as desired.



# Fat Quarter Four Patch

Quilt Pattern  
Fat Quarter Shop Exclusive

## EXTRA QUILT SIZES

To make the quilt in different sizes, follow the *Cutting and Quilt Assembly Instructions* here and refer back to pages 1 - 2 for the *Block Assembly*.

### CRIB QUILT

Finished Size: 30 1/2" x 30 1/2"

#### FABRIC REQUIREMENTS

- Four Fat Quarters  
Shop Fat Quarter Bundles at:  
[www.fatquartershop.com/fat-quarter-bundles](http://www.fatquartershop.com/fat-quarter-bundles)
- 1/2 yard accent fabric
- 1/2 yard binding
- 1 1/8 yards backing

#### CUTTING

- Cut four 18" x 20" rectangles into:  
2 - 8" squares - 8 total (Fabric A)  
10 - 3" squares - 40 total (Fabric B)
- Cut accent fabric into:  
32 - 3" squares (Fabric C)
- Cut binding fabric into:  
4 - 2 1/2" x width of fabric strips (Fabric D)

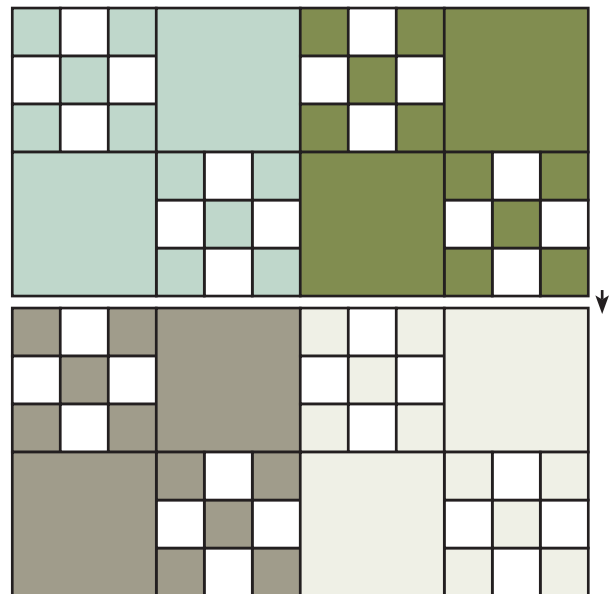
#### QUILT ASSEMBLY:

Make four Fat Quarter Four Patch Blocks.

Assemble Quilt Center.

Press rows in opposite directions.

Quilt Center should measure 30 1/2" x 30 1/2".



#### FINISHING:

Piece the Fabric D strips end to end for binding.

Quilt and bind as desired.



# Fat Quarter Four Patch

Quilt Pattern  
Fat Quarter Shop Exclusive

## THROW QUILT

Finished Size: 45 1/2" x 45 1/2"

### FABRIC REQUIREMENTS

- Nine Fat Quarters  
Shop Fat Quarter Bundles at:  
[www.fatquartershop.com/fat-quarter-bundles](http://www.fatquartershop.com/fat-quarter-bundles)
- 2/3 yard accent fabric
- 5/8 yard binding
- 3 1/8 yards backing

### CUTTING

- Cut nine 18" x 20" rectangles into:  
2 - 8" squares - 18 total (Fabric A)  
10 - 3" squares - 90 total (Fabric B)
- Cut accent fabric into:  
72 - 3" squares (Fabric C)
- Cut binding fabric into:  
6 - 2 1/2" x width of fabric strips (Fabric D)

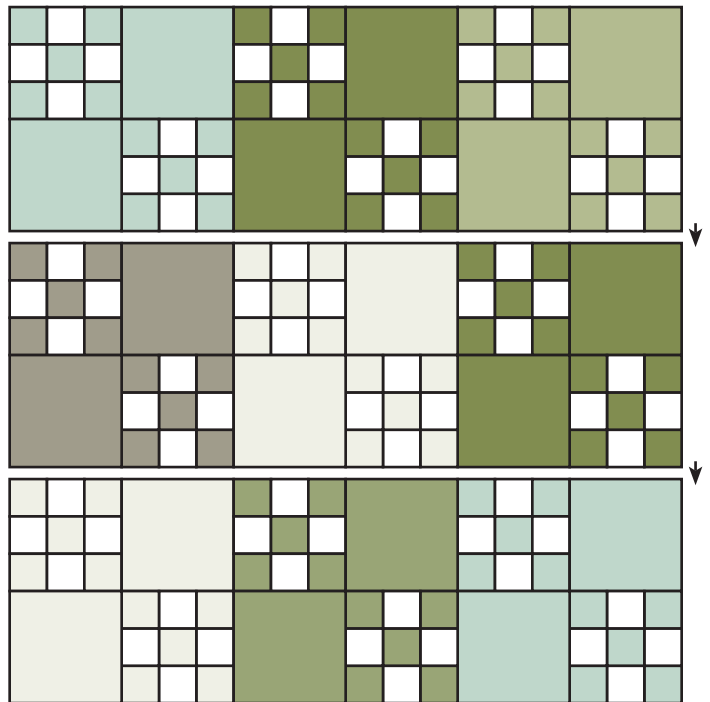
### QUILT ASSEMBLY:

Make nine Fat Quarter Four Patch Blocks.

Assemble Quilt Center.

Press rows in opposite directions.

Quilt Center should measure 45 1/2" x 45 1/2".



### FINISHING:

Piece the Fabric D strips end to end for binding.

Quilt and bind as desired.



# Fat Quarter Four Patch

Quilt Pattern  
Fat Quarter Shop Exclusive

## QUEEN QUILT

Finished Size: 90 1/2" x 90 1/2"

### FABRIC REQUIREMENTS

- Thirty-six Fat Quarters  
Shop Fat Quarter Bundles at:  
[www.fatquartershop.com/fat-quarter-bundles](http://www.fatquartershop.com/fat-quarter-bundles)
- 2 1/4 yards accent fabric
- 7/8 yard binding
- 8 3/8 yards backing

### CUTTING

- Cut thirty-six 18" x 20" rectangles into:  
2 - 8" squares - 72 total (Fabric A)  
10 - 3" squares - 360 total (Fabric B)
- Cut accent fabric into:  
288 - 3" squares (Fabric C)
- Cut binding fabric into:  
10 - 2 1/2" x width of fabric strips (Fabric D)

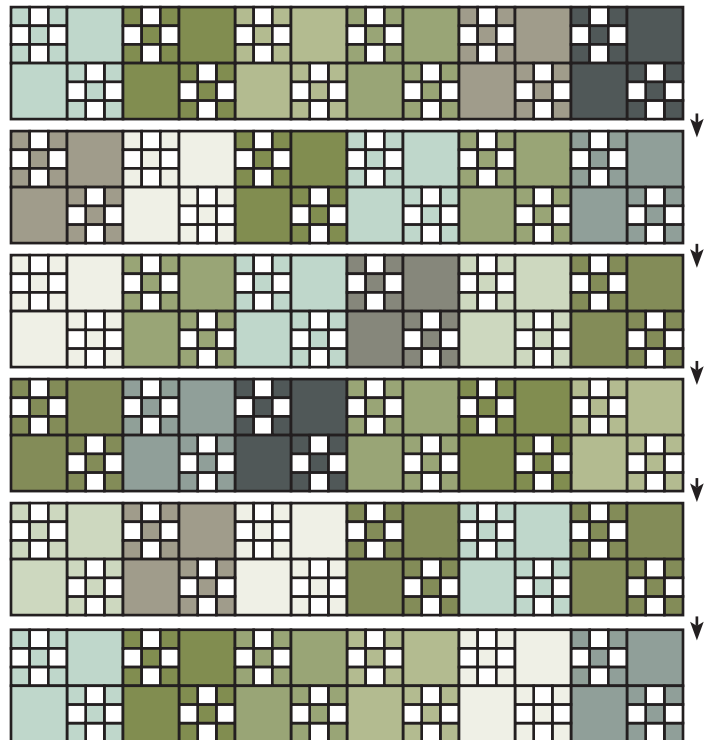
### QUILT ASSEMBLY:

Make thirty-six Fat Quarter Four Patch Blocks.

Assemble Quilt Center.

Press rows in opposite directions.

Quilt Center should measure 90 1/2" x 90 1/2".



### FINISHING:

Piece the Fabric D strips end to end for binding.

Quilt and bind as desired.